



THE  
**BALANCE**

BY THE BEACH



THE  
**BALANCE**

BY THE BEACH

MAKE EACH RHYTHM OF LIFE  
FLOW SMOOTHLY AND PEACEFULLY.





**Project Name :** The Balance By the Beach  
**Company Name :** The Beach Resort Company Limited  
**Segment :** Luxury Class  
**Address :** 98/88 - 98/89 Kata road, Karon, Mueng, Phuket, Thailand  
**Land Area :** 1-3-16.8 Rais  
**Number of Buildings :** 2 Buildings  
**Number of Units :** Total 112 Units  
**Parking Lots :** 39 Cars + 11 Motorbikes

**Type of Accommodation :**

1 bedroom duplex		49.5 Sq.m.
1 bedroom		37.98 Sq.m.
1 bedroom XL		56 Sq.m.
1 bedroom XL plus		57 Sq.m.
2 bedroom		74 Sq.m.
2 bedroom plus		76 Sq.m.

**Facilities :** Swimming Pool, Kids pool, Onsen, Yoga Area, Pet Garden, Supports Home Automation, Gym, Co-working Space, BBQ Area, Library



# THE BALANCE

## BY THE BEACH

Convey the inspiration of balance through meticulous vertical design architecture in Modern & Contemporary Style.

Ready to connect with nature and satisfy its varying needs at every stage of life.

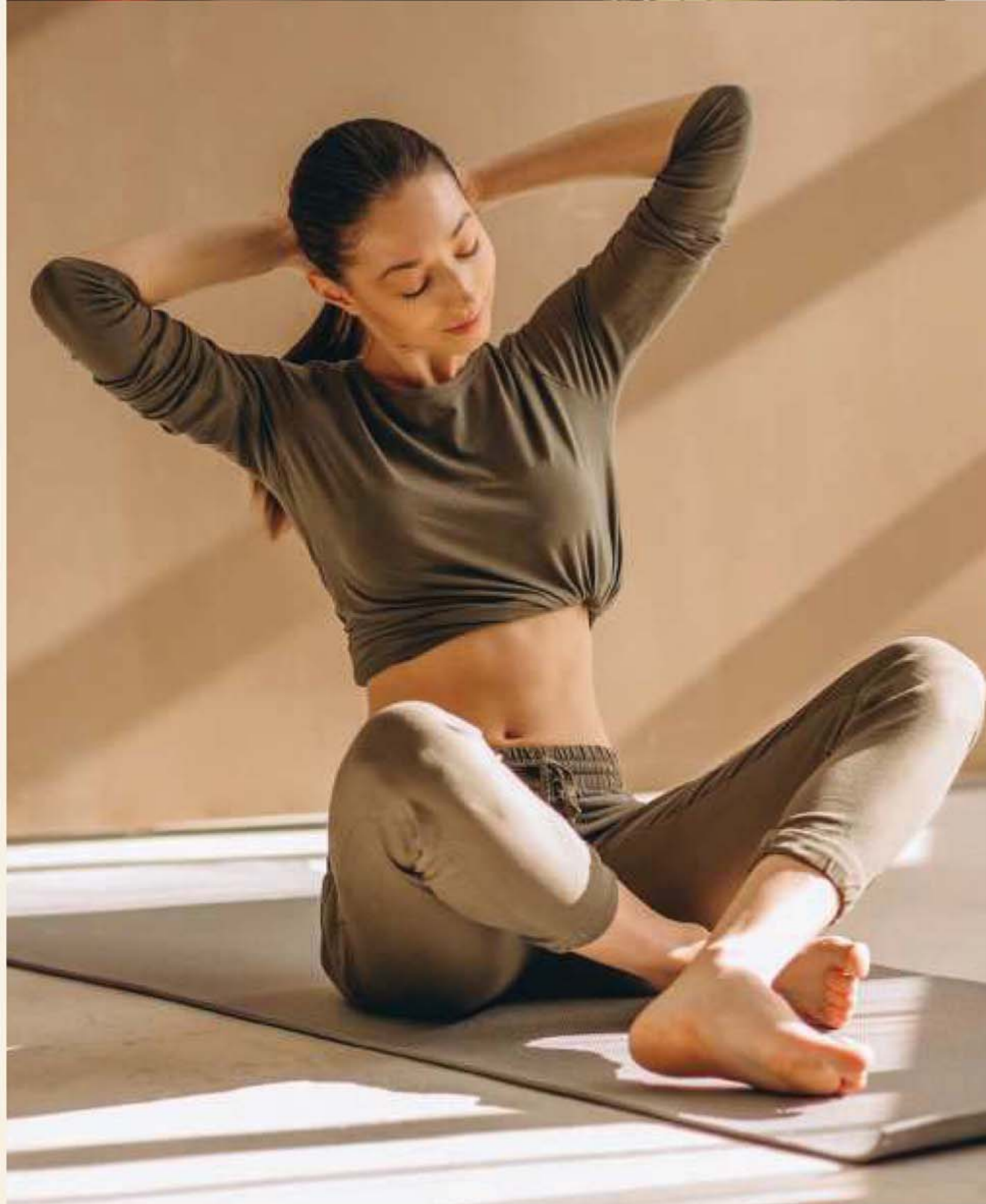
BECAUSE YOUR 'LIFE' REQUIRES 'BALANCE' IN ALL ASPECTS.





INSPIRED BY THE '4 ASPECTS'  
OF LIFE BALANCE.

**RESIDENCE  
VACATION  
WELLNESS AND  
RELATIONSHIPS...**





# FACILITIES



PET FRIENDLY



PET GARDEN



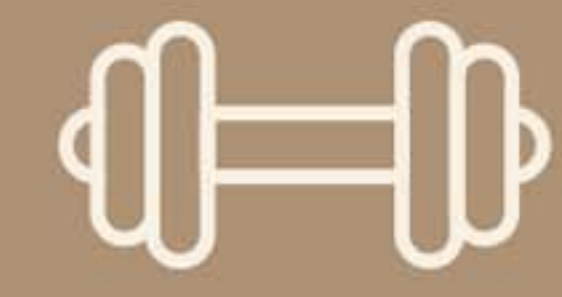
GARDEN



POOL



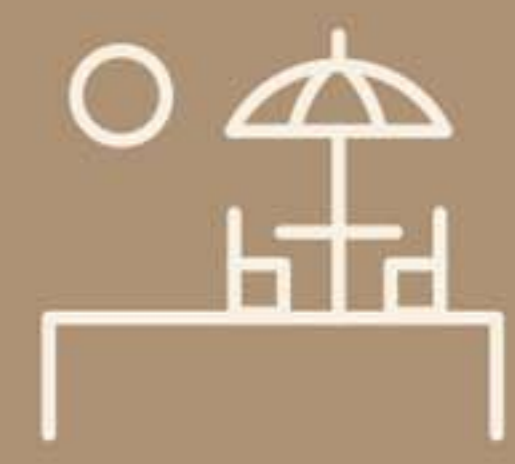
CO-WORKING SPACE



FITNESS



LOBBY



ROOFTOP



ONSEN



YOGA SPACE



LIBRARY



BBQ ZONE





RELAX WHILE ENJOYING A LUXURIOUS  
**SWIMMING POOL**

Escape to a world of serenity and rejuvenation  
in the tranquil oasis of our breathtaking pool.





# NATURAL SCENE LIVING SPACE

Take a leisurely walk through the lush greenery and soak in the beauty of nature around you. Let the serene atmosphere of our garden soothe your mind and relax your body.



## A LUXURIOUS, MODERN, CO-WORKING SPACE

Experience the perfect work-life balance in our state-of-the-art co-working facility with an area of over 80 sq.m. Enjoy the flexible workspaces and modern amenities that cater to your unique business needs, may it be for meeting or other work activities.

## A FULL-FUNCTION FITNESS CENTRE

Elevate your fitness routine to achieve your goals of a healthy and active lifestyle in our vibrant fitness centre.



## A SPACIOUS LOBBY

Our lobby is more than just a welcoming space - it's a reflection of our commitment to promoting life balance and celebrating the unique identity of The Balance Condominium.

\*The image is just for advertising

## OUTDOOR YOGA

Enhance your self-care routine in our tranquil and private garden area, designed specifically for yoga and meditation. Enjoy a natural and serene environment that helps you balance both body and mind, and provides a perfect space to connect with your self.



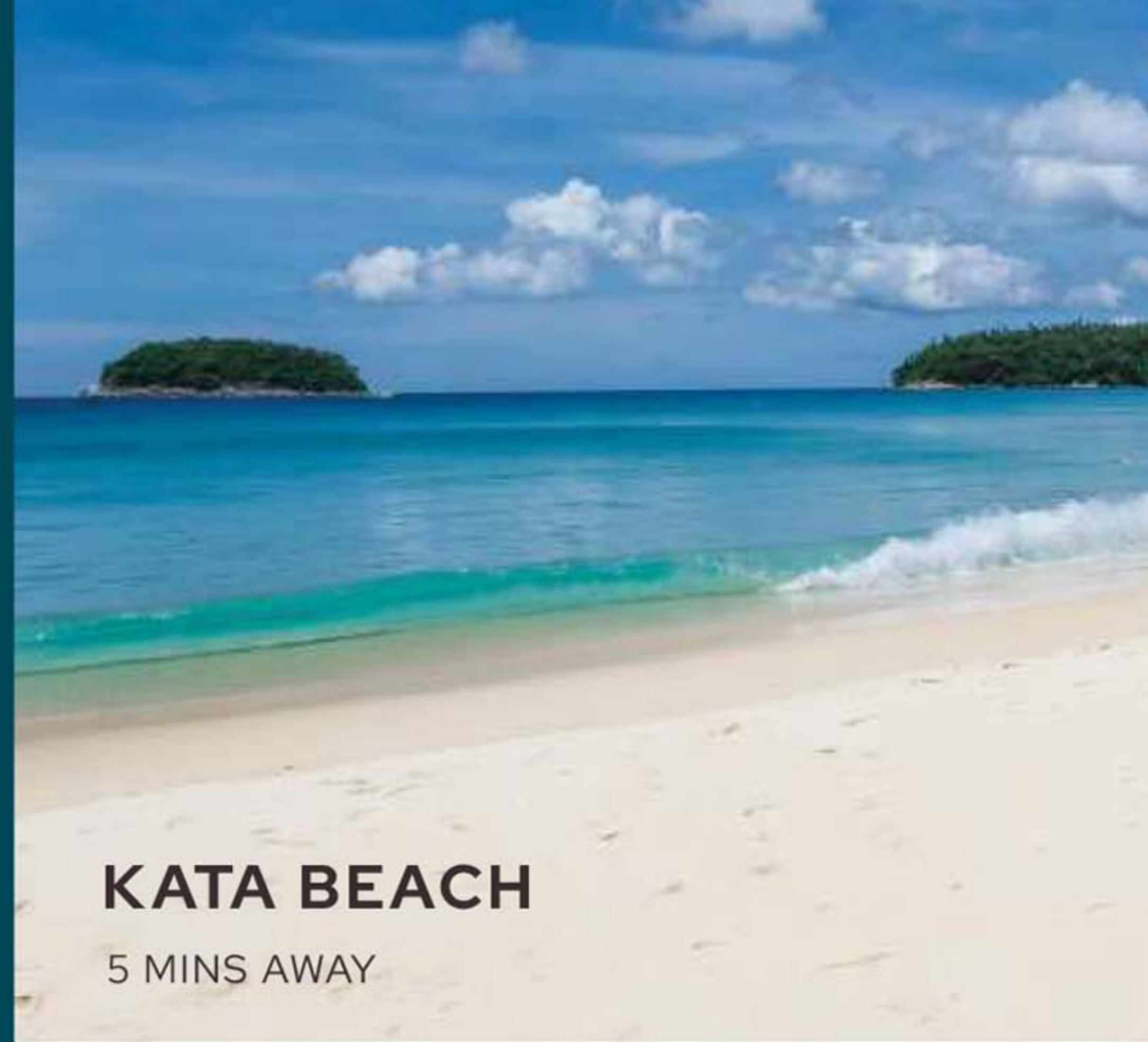
## ROOFTOP GARDEN

Our Rooftop Garden, set amidst a serene and cool atmosphere, is perfect for relaxation, mental rejuvenation, and enjoying the beautiful views of Kata Beach. But beyond its calming ambiance, the Rooftop Garden offers even more.

The image is just for advertising

# LOCATION

THE PROPERTY IS ADJACENT TO A TOURIST DESTINATION. IN THE MIDST OF CHARMING NATURE.



**KATA BEACH**

5 MINS AWAY



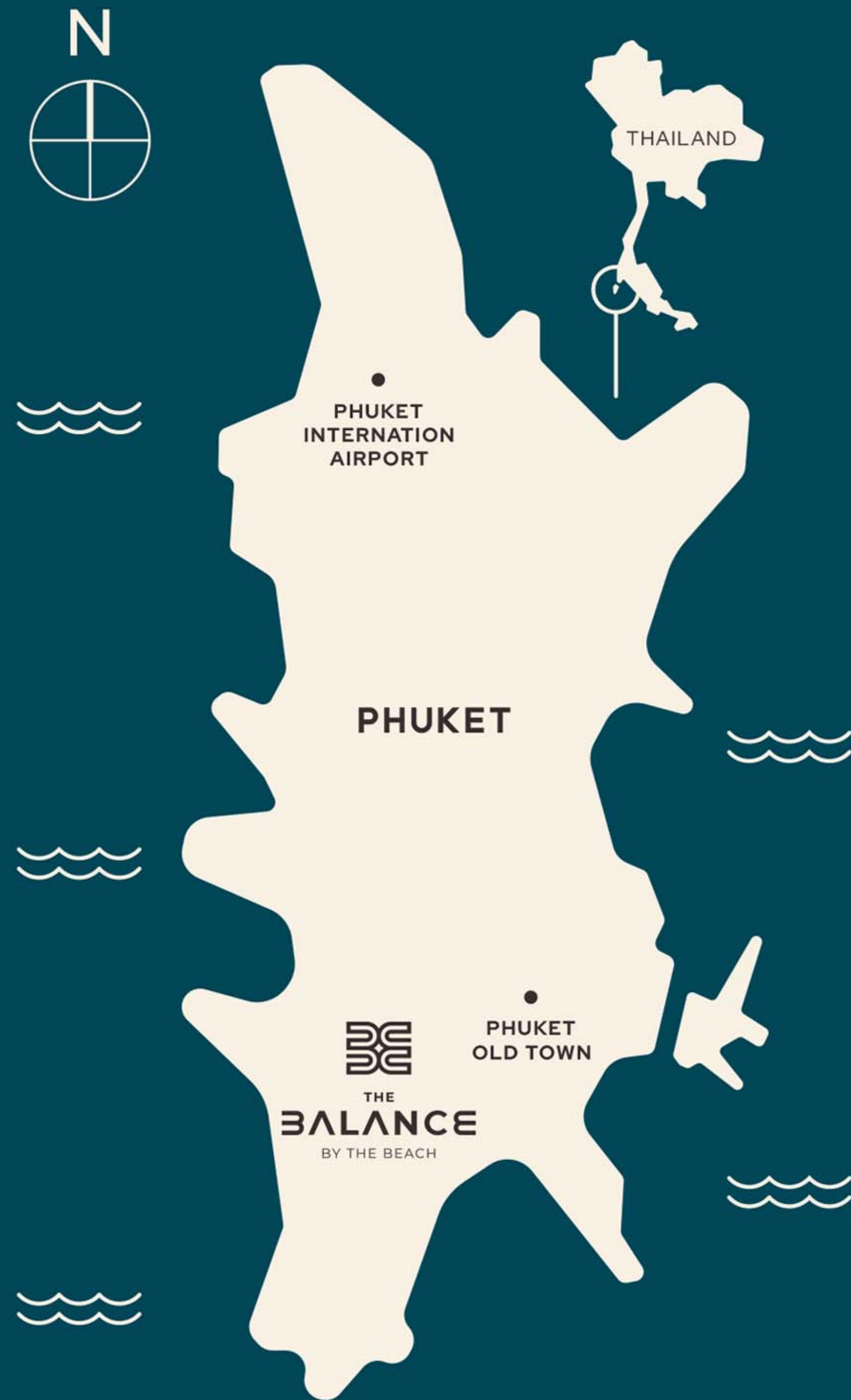
**BIG BUDDHA**

7.8KM



**PHUKET OLD TOWN**

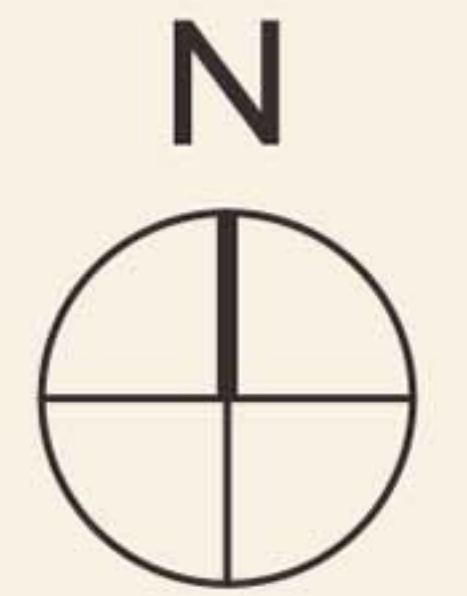
14.9 KM



**KARON BEACH**

**MAKRO**





MAE SOMJIT MARKET



**THE BALANCE**  
BY THE BEACH

THE BEACH CENTER TOWN HOME

- THE BEACH PLAZA
- SHOP PLAZA
- WELLNESS
- MARKET
- RESORT
- OTHER

300 M. FROM THE BALANCE CONDO

---

WALKING STREET

---

TO KARON BECH

KATA BEACH

KATA ROAD

CLUBMED

NEW KATA ROAD

SURF DAY KATA BEACH

THE BEACH PLAZA

THE GRAND KATA NIGHT PLAZA

WELLNESS

SEAFOOD MARKET

KATA NIGHT PLAZA

SHOP HOUSE

SHOP HOUSE

THE BEACH RESORT

SHOP HOUSE

THE BEACH CENTER TOWN HOME

THANYA SPA

WINE CONNECTION

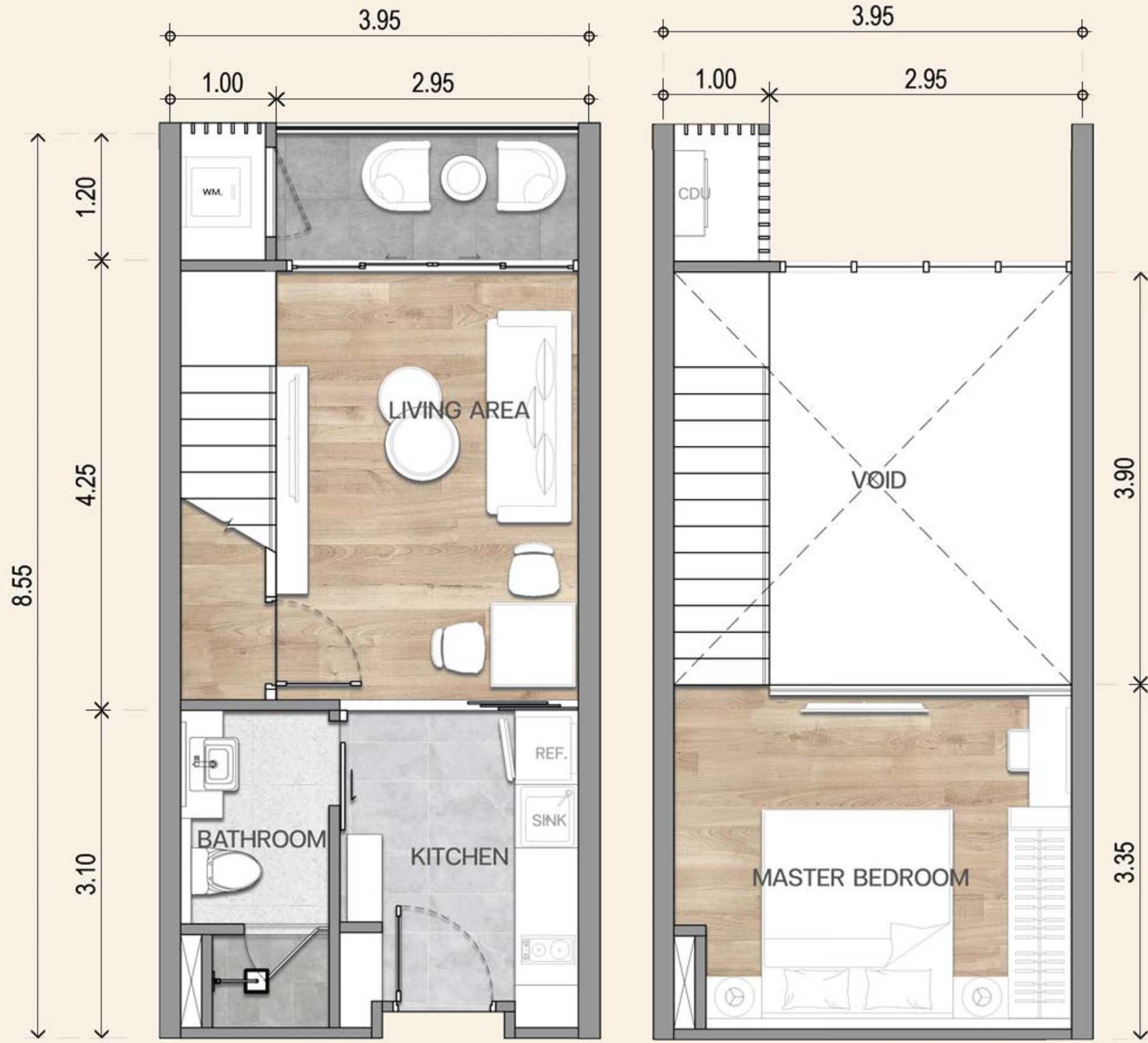
# DUPLEX ROOM

49.5 SQ.M.



1ST FLOOR

2ND FLOOR





# ONE BEDROOM

37.98 SQ.M.



1 BEDROOM



LIVING



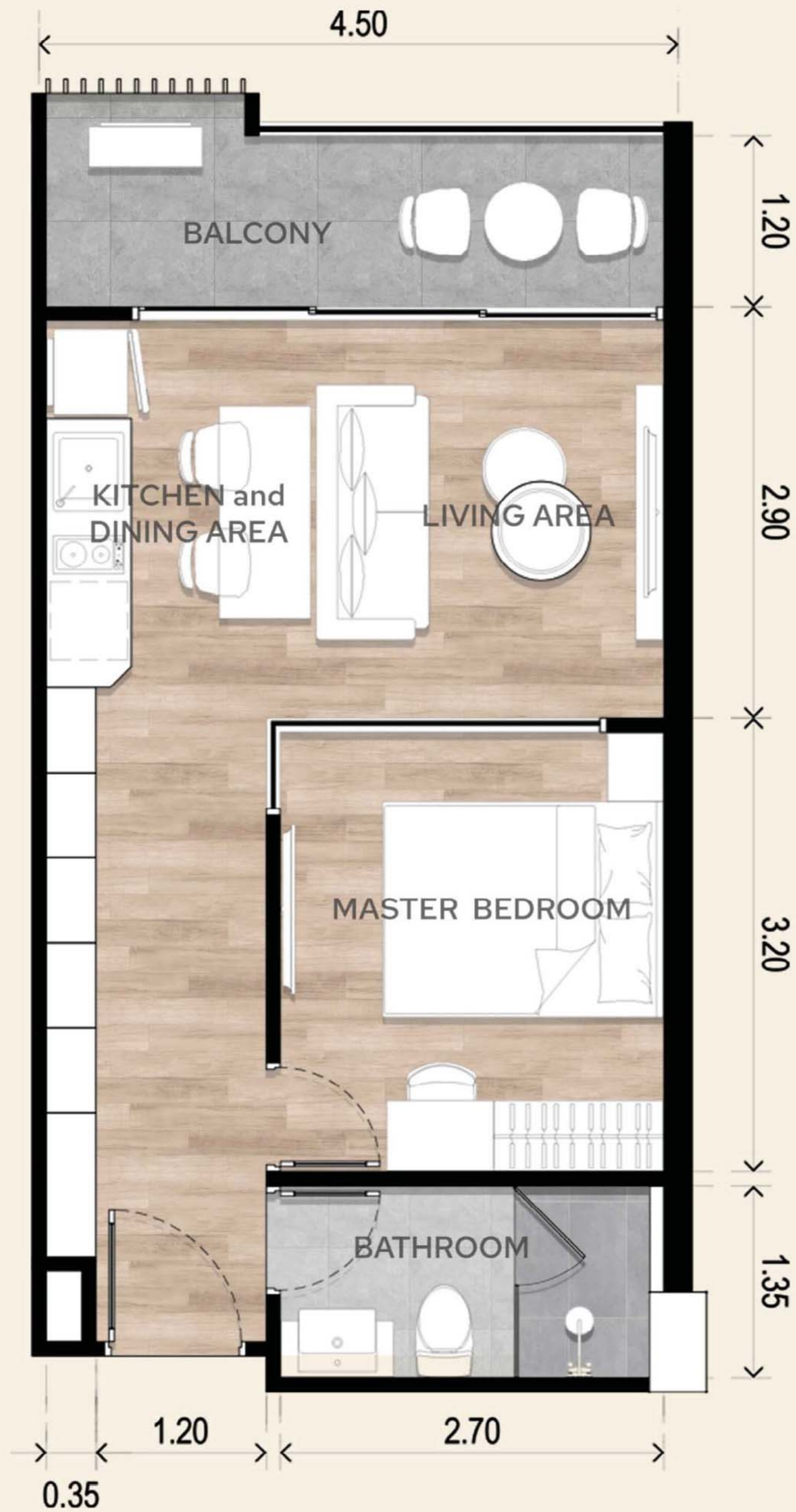
KITCHEN



DINING TABLE



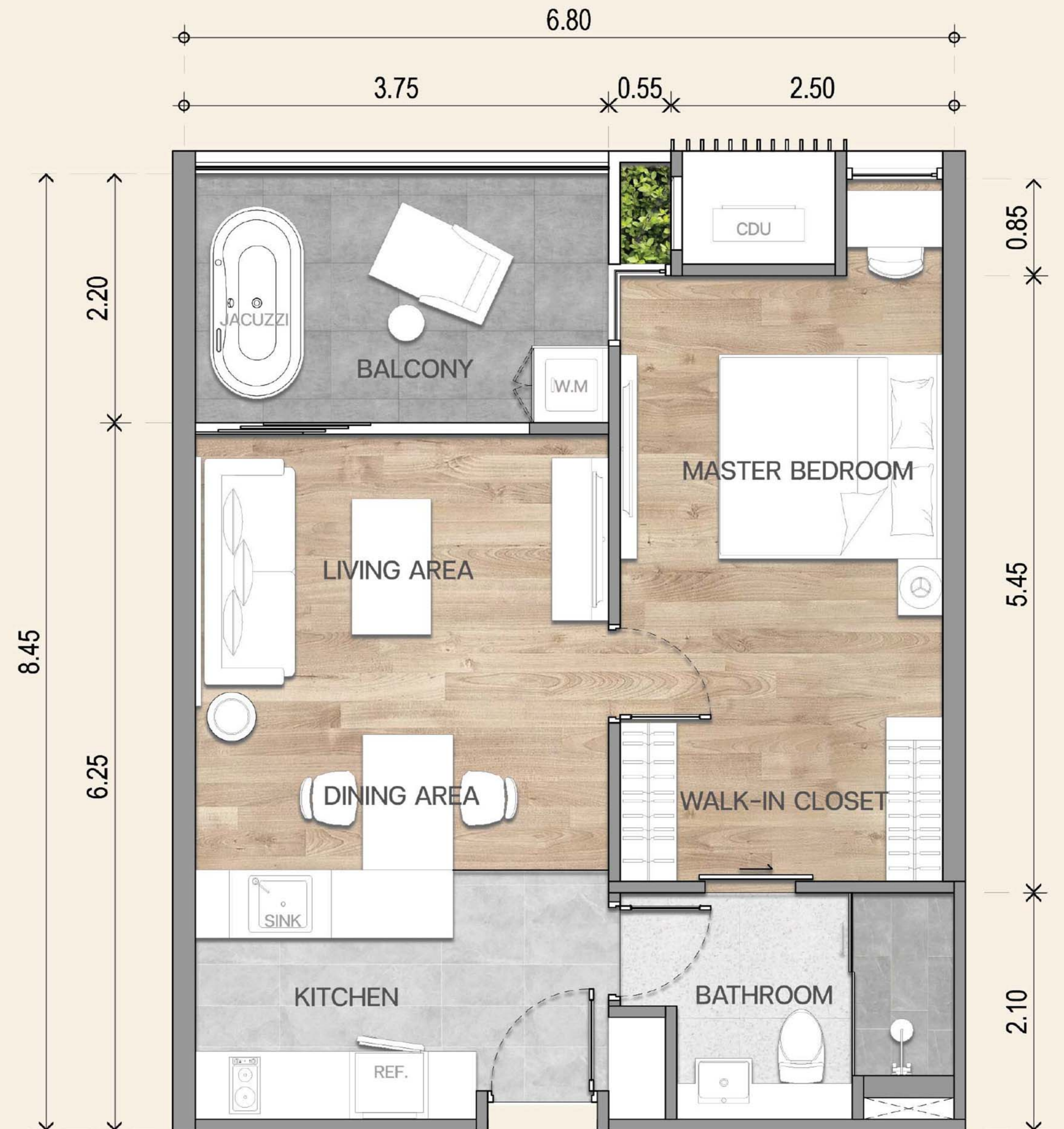
1 BATHROOM





# ONE BEDROOM XL

56 SQ.M.

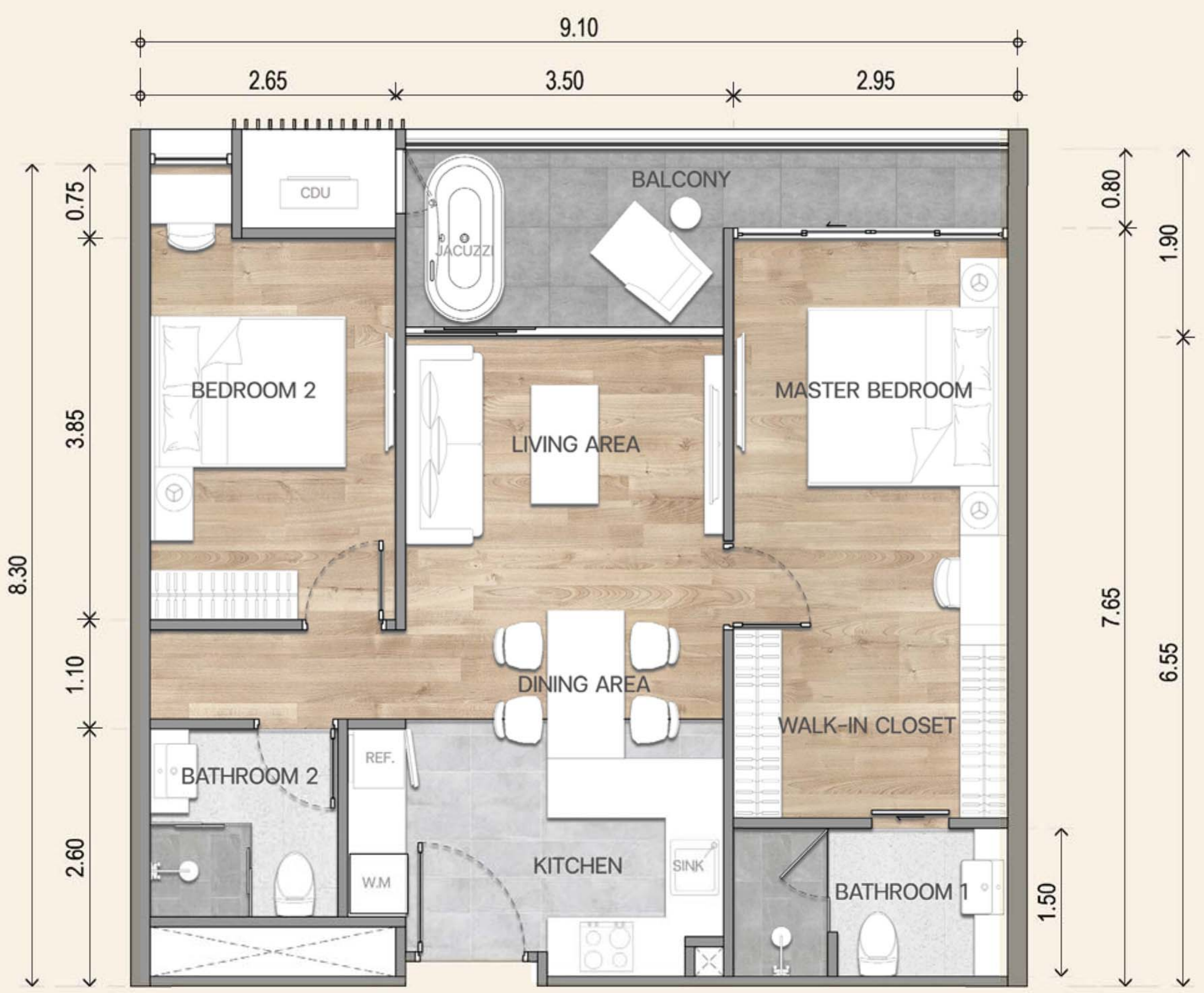






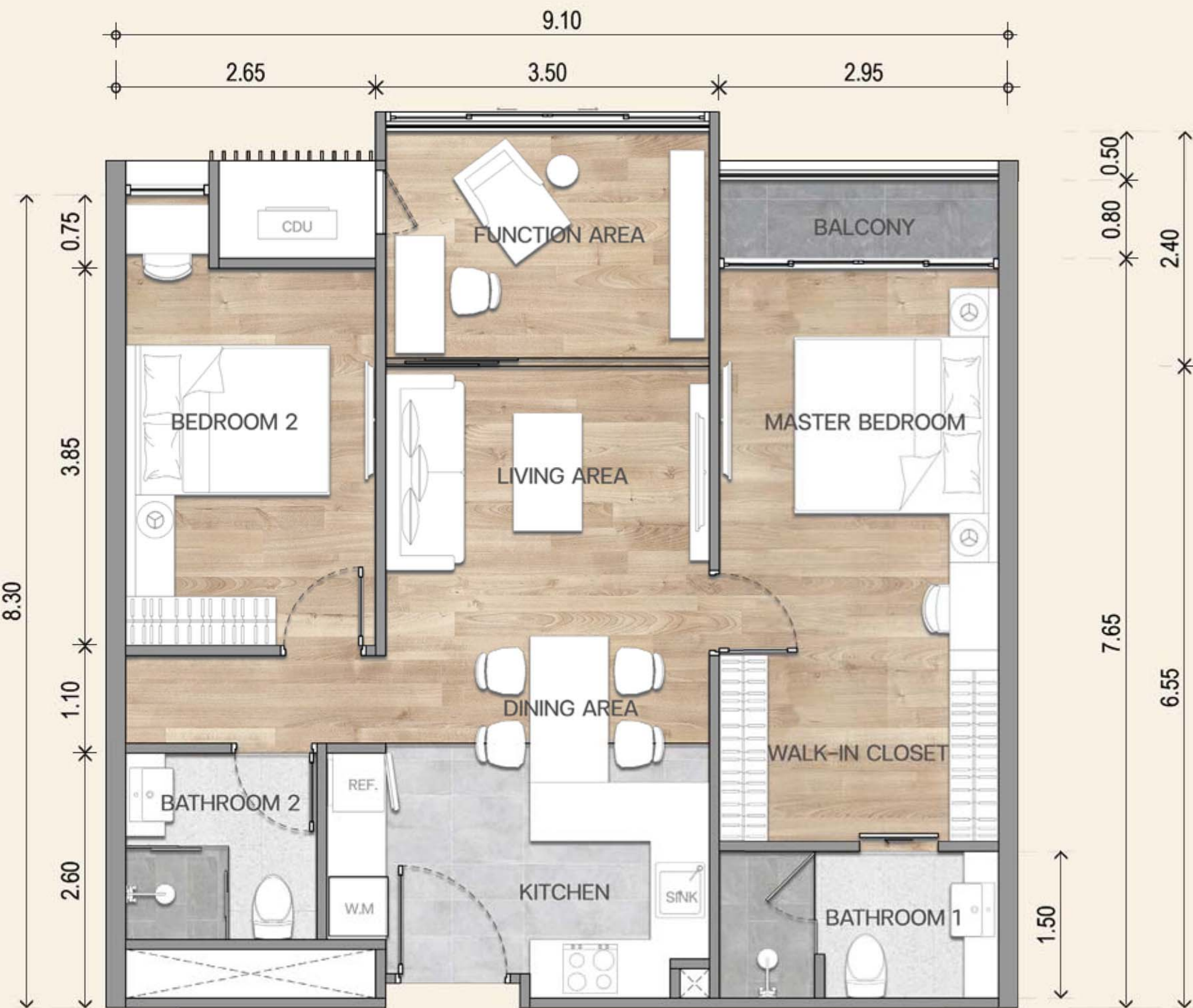
# TWO BEDROOM

74 SQ.M.



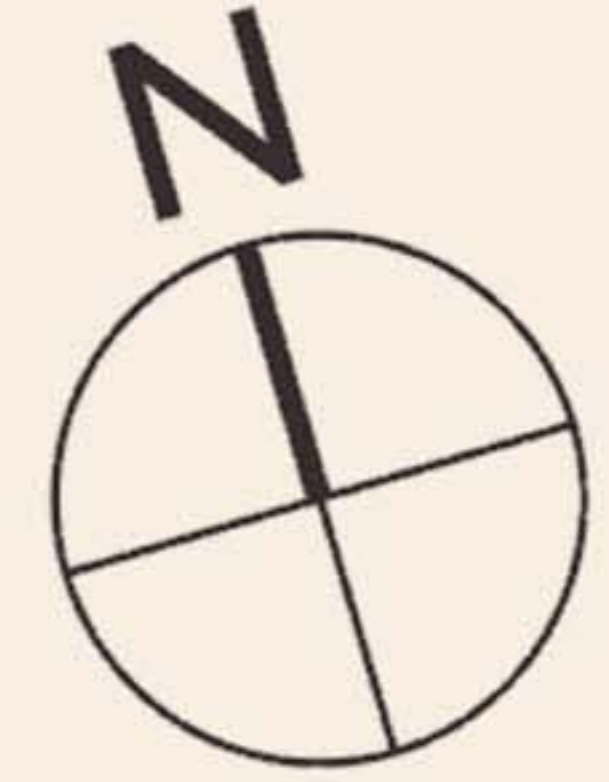
# TWO BEDROOM PLUS+

76 SQ.M.



# FLOOR PLAN

BASEMENT FLOOR



# FLOOR PLAN

## 1ST FLOOR

DUPLEX & FACILITIES



# FLOOR PLAN

## 2ND FLOOR

-  1 BEDROOM
-  1 BEDROOM XL
-  1 BEDROOM XL+
-  2 BEDROOM



# FLOOR PLAN

## 3RD FLOOR

- 1 BEDROOM
- 1 BEDROOM XL+
- 2 BEDROOM



# FLOOR PLAN

## 4TH FLOOR

- 1 BEDROOM
- 1 BEDROOM XL
- 1 BEDROOM XL+
- 2 BEDROOM+



# FLOOR PLAN

## 5TH FLOOR

- 1 BEDROOM
- 1 BEDROOM XL
- 1 BEDROOM XL+
- 2 BEDROOM



# FLOOR PLAN

## 6TH FLOOR

- 1 BEDROOM
- 1 BEDROOM XL
- 1 BEDROOM XL+
- 2 BEDROOM+



# FLOOR PLAN

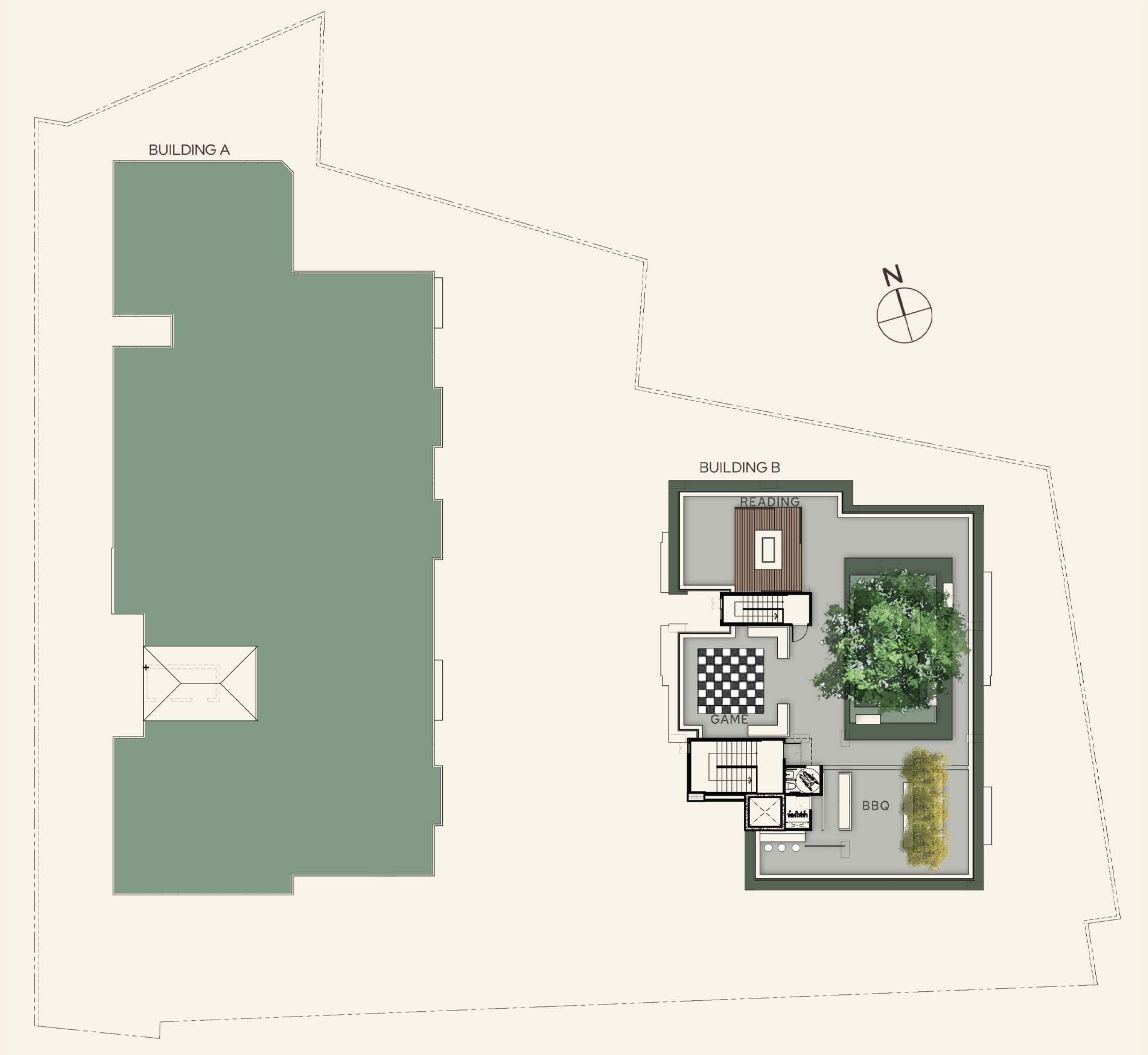
## 7TH FLOOR

- 1 BEDROOM
- 1 BEDROOM XL
- 1 BEDROOM XL+
- 2 BEDROOM+



# FLOOR PLAN

## ROOFTOP





# KARN PRACHUMPAN

**Date of birth :** 16th November 1968

**Nationality :** Thai

**Domicile :** Phuket Province

**Educational Qualification :**

Diploma of marketing and communication,  
Lopburi commercial college of technical.

## **CURRENT POSITION :**

CEO of the Beach Group Co., Ltd.

CEO of K.W. Development Co., Ltd.

CEO of Andaman City Development Co., Ltd.

## **SOCIAL POSITION :**

- Deputy Director for the Andaman International Health Center, PSU Phuket Campus.
- Advisor to the senate sub-committee on marine tourism.
- Advisor to the Tourism Industry Council of Thailand.
- Secretary-general of the Andaman & Thai Gulf Wellness Hotel Association.
- Vice President of Thai Charter.
- Foundation vice President of foundation of Kata-Karon development.
- President of the Audit and Monitoring Committees of Police Administration at Karon Police Station.
- Honorary Advisor of Karon Municipality



THE BEACH  
CONDOTEL



THE BLOC





BEAR PACKER  
PATONG HOTEL

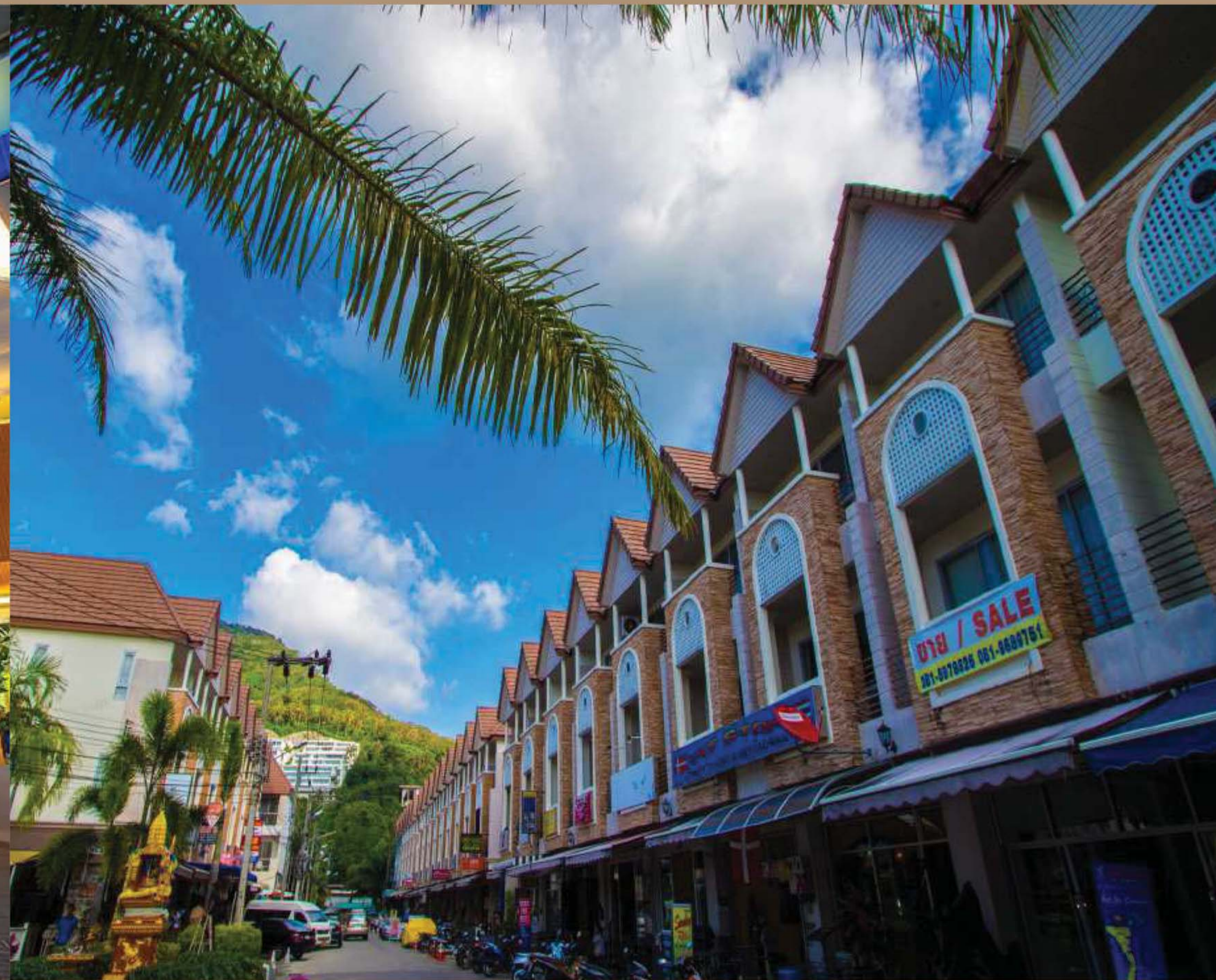


SURF HOUSE  
PATONG BEACH





**HOTEL CLOVER  
PATONG**



**THE BEACH CENTER  
TOWN HOME**





ARYA BEACH  
HOTEL



THE BEACH  
BOUTIQUE HOUSE



THE  
**BALANCE**  
BY THE BEACH

**CONTACT**

**THE BEACH RESORT COMPANY LIMITED.**  
98/88 - 98/89 KATA ROAD, KARON, MUENG, PHUKET, THAILAND.

**TEL:** +66 93 490 0656

**EMAIL :** [NAM@THEBALANCECONDO.COM](mailto:NAM@THEBALANCECONDO.COM) , [INFO@THEBALANCECONDO.COM](mailto:INFO@THEBALANCECONDO.COM) ,  
[SALES@THEBALANCECONDO.COM](mailto:SALES@THEBALANCECONDO.COM)

